



## *The Miller's Tail*

*A Country Pub with a past, present and future*

**"I've driven past so many times ... I am so glad I stopped. I will never drive past again without stopping in!"**

*The Windmill can be dated back to the 1740s and has remained in The Hughes family since the 1920s. This newsletter will share the spirit of the pub as well as that of The Hughes family.*

ISSUE 2 Feb '20

### **The Present**

**W**e have all survived 'Dry January', and as the birds start to twitter and the days lengthen, we look forward to the approaching half term holidays as well as Valentine's Day (more details on page) as well as some other key dates for the diary. Make sure you check the website for menu updates and book a table to avoid disappointment.



#### SPRING KEY EVENTS:

**VALENTINE'S FRIDAY 14<sup>TH</sup> FEB- *SEE BACK PAGE***

**ST. DAVIDS' DAY SUNDAY 1<sup>ST</sup> MARCH**

**MOTHERS' DAY SUNDAY 22<sup>ND</sup> MARCH**

**EASTER SUNDAY 12<sup>TH</sup> APRIL**

Don't hesitate to get in touch: 01743 884234 [info@windmillatrowton.com](mailto:info@windmillatrowton.com)

## The Past

It was lovely to see so many new and familiar faces over Christmas. It was especially nice to welcome everyone to the 'Carols Around the Tree' event. Megan Hughes- pictured below- who ran The Windmill for over 50 years, was in excellent spirits and had a wonderful time chatting to regulars and watching as The Alberbury Young Farmers' bell ringing performance of some well-known carols. We thank The Baschurch Brass Band for their contributions to proceedings. They accompanied some very enthusiastic (and *fairly* tuneful) singing. As well as being an event full of The Windmill's customer's community spirit the night also saw us raise £1,000 for The Robert Jones & Agnes Hunt Orthopaedic Hospital, Gobowen. The hamper was won by Emma Siese.



## The Past Continued...

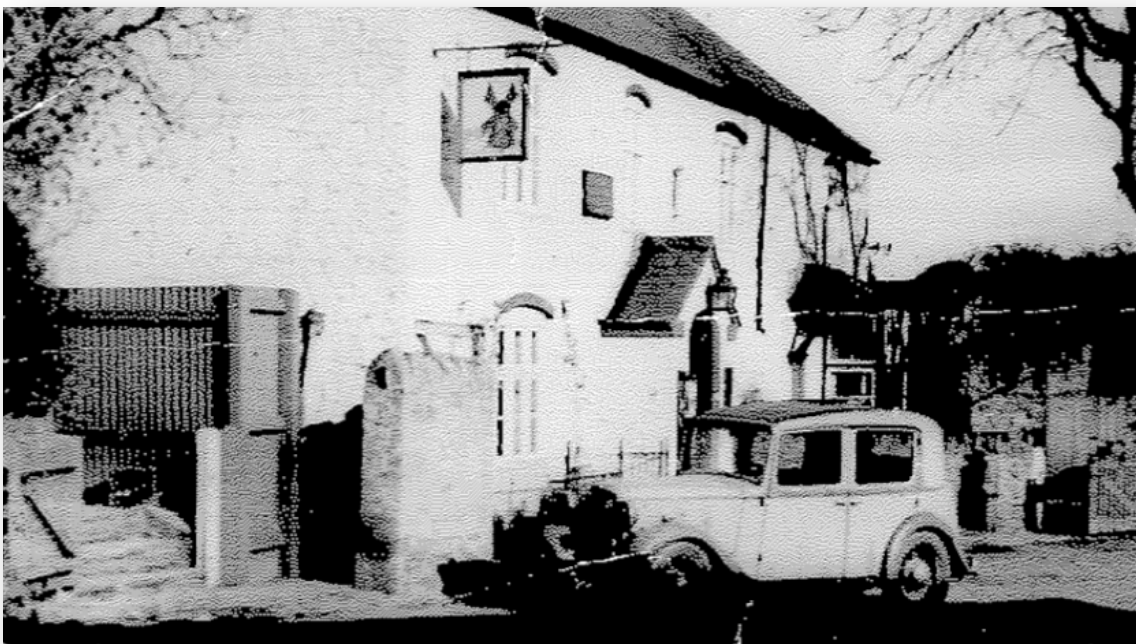
The picture below shows the bar during the 1960s. You will notice that the original bar remains in-tact. The picture shows (from left to right) Charlie Hughes , Granny (Cis) Hughes, Megan Hughes and Bernard Bywater and Dot. Bernard was the barman at The Windmill, and also the caretaker at Rowton Castle and resident at Rowton Lodge (the thatched cottage at



entrance to The Castle) where he lived with his wife Dot.

The second picture below shows the exterior of the pub during the 1930s. This was scanned in from an original photograph, but the eagle-eyed amongst you will notice that it has been somewhat flipped during the original photo developing process. It is a little disorientating, but you can see: the original pub entrance, an

old sign (painted by Lady Leighton) as well as the corner of the walnut tree., which grew on what is now the front car park. The car parked outside the pub in the picture is very much reflective of this era, does any one recognise the make/model? Until the early 1960s there was a Regent Petrol pump outside The Windmill and many people could stop for a break and re-fuel on daily commutes or on longer excursions into Wales and the coast.





## The Future

Valentine's Day and the school holidays are fast approaching.

Make sure you join us to celebrate some relaxing romance 14<sup>th</sup> February. Our special valentine's menu is served on Friday 14<sup>th</sup> -Sat 16<sup>th</sup> February 5pm-9pm (2 courses— £24.95 3 courses— £28.50). Make sure you book now: 01743 884234

Items on the menu include:

- Pan fried seabass ,
- Sage butter roasted pork loin
- Provençale vegetable stuffed filo parcel

As well as a range of other options including vegan/vegetarian alternatives.

This year we are very excited to offer an alternative approach to puddings. To avoid 'food envy' and to mitigate any unromantic disputes, we have designed a: 'choose any 3' approach, so that you can make your own bespoke trio of taster puds! These include:

- mini meringues
- brownies
- and mini crème brûlée

Why not meet up at The Windmill for a walk. The bridle path at the back of The Windmill takes you to the view of the recently restored Windmill and on a footpath via a public footpath over a ladder-type stile into Loton Deer Park . Or you could follow the Park wall to The Rock where the local Cardeston stone was quarried and now there is a lovely body of water as well as some magnificent flora and fauna.

Fresh flowers are part of the Windmill's distinct charm. Jane endeavours to arrange fresh, hand-cut flowers every week and many customers often kindly comment on this 'nice touch' which makes The Windmill so special. Below are some examples of some of Jane's recent arrangements.

